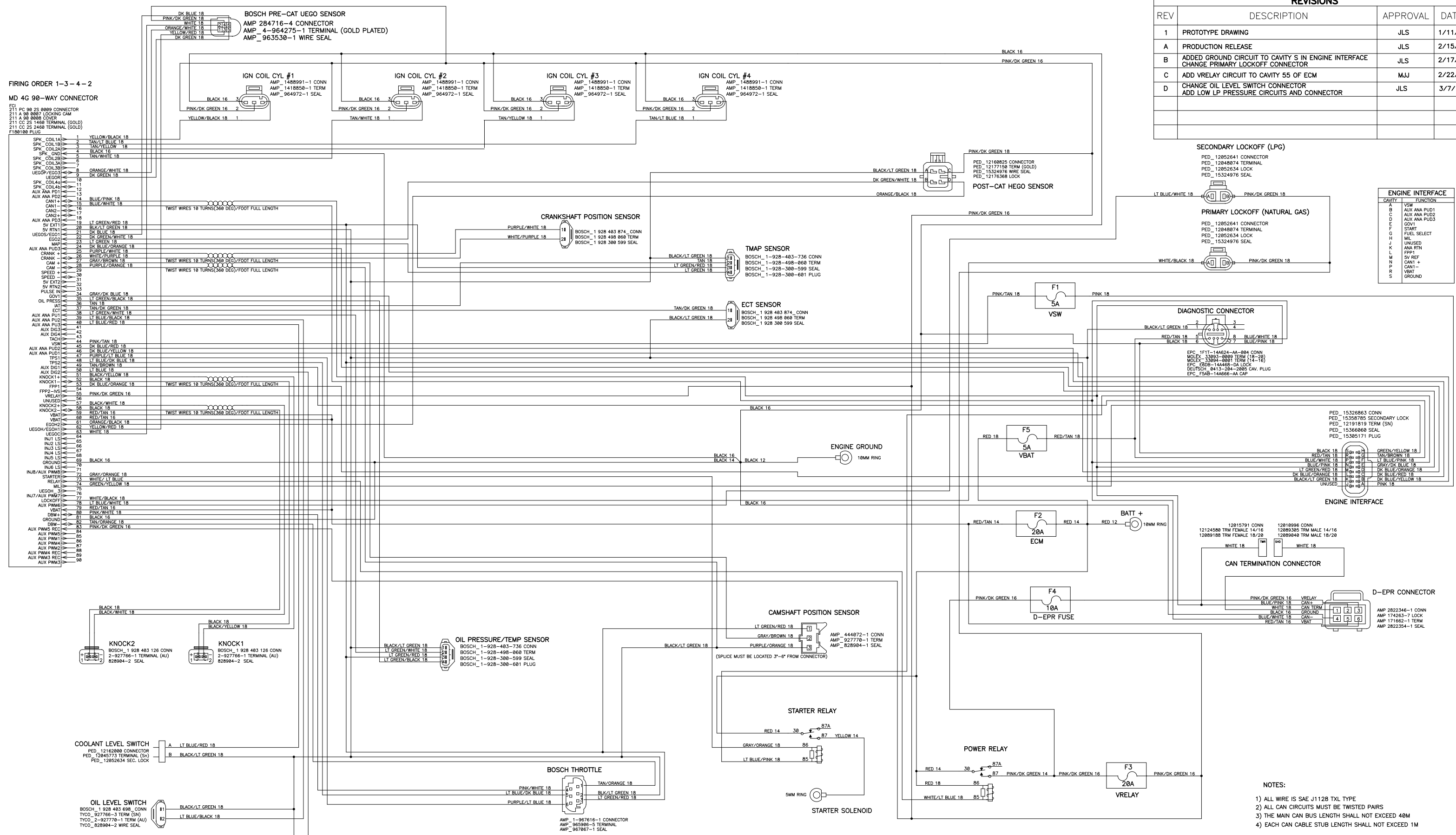


REVISIONS			
REV	DESCRIPTION	APPROVAL	DATE
1	PROTOTYPE DRAWING	JLS	1/11/16
A	PRODUCTION RELEASE	JLS	2/15/16
B	ADDED GROUND CIRCUIT TO CAVITY S IN ENGINE INTERFACE CHANGE PRIMARY LOCKOFF CONNECTOR	JLS	2/17/16
C	ADD VRELAY CIRCUIT TO CAVITY 55 OF ECM	MJJ	2/22/16
D	CHANGE OIL LEVEL SWITCH CONNECTOR ADD LOW LP PRESSURE CIRCUITS AND CONNECTOR	JLS	3/7/16



FIRING ORDER 1-3-4-2
MD 4G 90-WAY CONNECTOR

- F01 PC 98 25 0009 CONNECTOR
- 211 A 98 0807 LOCKING CAM
- 211 A 98 0808 COVER
- 211 CC 25 1468 TERMINAL (GOLD)
- 211 CC 25 2468 TERMINAL (GOLD)
- F189100 PLUG
- SPK_COIL1A 1 YELLOW/BLACK 18
- SPK_COIL1B 2 TAN/LT BLUE 18
- SPK_COIL2A 3 TAN/YELLOW 18
- SPK_COIL2B 4 BLACK 18
- SPK_COIL3A 5 TAN/WHITE 18
- SPK_COIL3B 6 BLACK 18
- UEG0P/EG03 7 ORANGE/WHITE 18
- UEG0R 8 DK GREEN 18
- SPK_COIL4A 9
- SPK_COIL4B 10
- AUX_ANA_P01 11
- AUX_ANA_P02 12
- CAN1 13
- CAN2 14
- AUX_ANA_P03 15
- 5V_EXT1 16
- 5V_EXT2 17
- UEG0S/EG01 18
- EG02 19
- MAP 20
- AUX_ANA_P03 21
- CRANK + 22
- CRANK - 23
- CAM + 24
- CAM - 25
- SPEED + 26
- SPEED - 27
- 5V_EXT2 28
- 5V_EXT1 29
- 5V_RT2 30
- PULSE IN 31
- GOV1 32
- OIL_PRESS 33
- AT 34
- ECT 35
- AUX_ANA_P01 36
- AUX_ANA_P02 37
- AUX_ANA_P03 38
- AUX_D03 39
- AUX_D04 40
- TACH 41
- VSW 42
- AUX_ANA_P02 43
- AUX_ANA_P01 44
- TPS1 45
- TPS2 46
- AUX_D01 47
- AUX_D02 48
- KN0CK1 49
- KN0CK2 50
- FPP2-VS 51
- VRELAY 52
- UNUSED 53
- KN0CK2+ 54
- KN0CK2- 55
- VBAT 56
- VBAT 57
- UEG0H/EG0H1 58
- UEG0C 59
- IN1_LS 60
- IN2_LS 61
- IN3_LS 62
- IN4_LS 63
- IN5_LS 64
- GROUND 65
- IN6_LS 66
- IN8/AUX_PWM3 67
- STARTER 68
- RELAY 69
- ML 70
- UEG0H_3 71
- IN7/AUX_PWM7 72
- LOCKOFF 73
- AUX_PWM8 74
- VBAT 75
- DW+ 76
- GROUND 77
- DW- 78
- AUX_PWM5_REC 79
- AUX_PWM6 80
- AUX_PWM1 81
- AUX_PWM4 82
- AUX_PWM2 83
- AUX_PWM4_REC 84
- AUX_PWM5_REC 85
- AUX_PWM3 86
- 87
- 88
- 89
- 90

CAVITY	FUNCTION
A	VSW
B	AUX ANA PUD1
C	AUX ANA PUD2
D	AUX ANA PUD3
E	GOV1
F	START
G	FUEL SELECT
H	ML
J	UNUSED
K	ANA RTN
L	FPP1
M	5V REF
N	CAN1 +
P	CAN1 -
R	VBAT
S	GROUND

DIAGNOSTIC CONNECTOR
EPC 1F1T-14A624-AA-004 CONN
MOLEX-33093-0009 TERM (18-28)
MOLEX-33094-0001 TERM (14-16)
EPC E80B-14A468-DA LOCK
DEUTSCH 9413-204-0895 CAV. PLUG
EPC F5AB-14A666-AA CAP

ENGINE INTERFACE

D-EPR CONNECTOR
AMP 2822346-1 CONN
AMP 174263-7 LOCK
AMP 171662-1 TERM
AMP 2822354-1 SEAL

- NOTES:
- 1) ALL WIRE IS SAE J1128 TXL TYPE
 - 2) ALL CAN CIRCUITS MUST BE TWISTED PAIRS
 - 3) THE MAIN CAN BUS LENGTH SHALL NOT EXCEED 40M
 - 4) EACH CAN CABLE STUB LENGTH SHALL NOT EXCEED 1M

This drawing is the property of EControls Inc. and is subject to return upon request, and is not to be copied or reproduced without permission. All rights reserved.

ECNTRLS INC.

Title: **WEICHAJ P4, BI-FUEL**

Size: D Number: _____ Rev: _____

Date: _____ Drawn By: _____

Filename: _____ Sheet 1 of 1